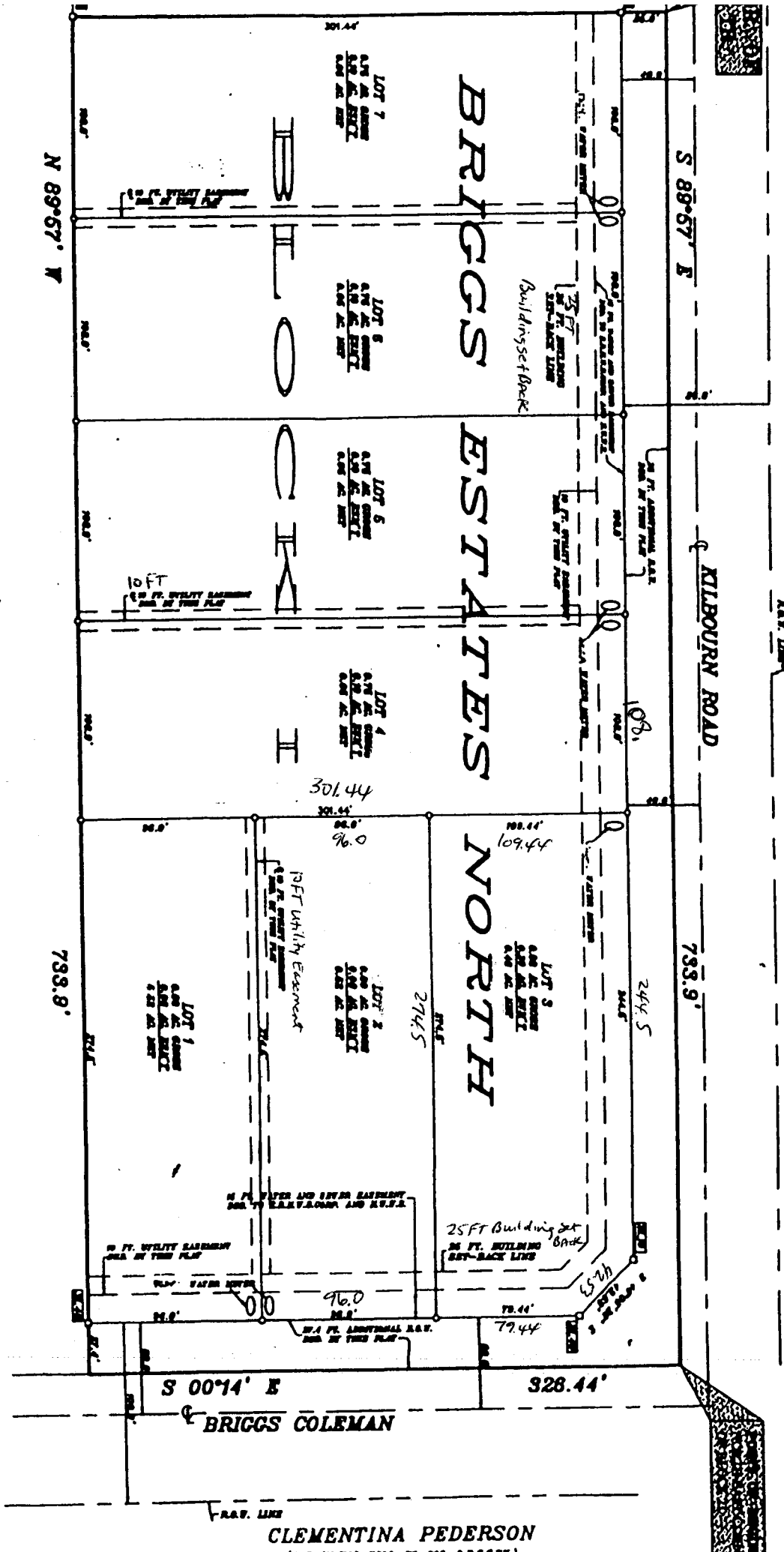


[Handwritten Signature]
 QUANTITY 3000

WHISPERING OAKS
 (SEE DE QUA 1, PG. 200-2, 200-3)

328.44 FEET TO A POINT ON THE NORTH BOUNDARY LINE OF SAID BLOCK 21, THENCE ALONG THE NORTH BOUNDARY LINE OF SAID BLOCK 21, SOUTH 88 DEGREES 57 MINUTES EAST, A DISTANCE OF 7333.9 FEET TO THE PLACE OF BEGINNING, CONTAINING 3.50 ACRE OF LAND MORE OR LESS, INCLUSIVE OF ANY AND ALL EASEMENTS, RESTRICTIONS, EXCEPTIONS OR DEDICATIONS THAT MIGHT BE OF RECORD.



CLEMENTINA PEDERSON
 (SEE DE QUA 1, PG. 200-2, 200-3)

LARRY & KEIBA CASTILLO
 (SEE DE QUA 1, PG. 200-2, 200-3)

CALIFORNIA COUNTY BUILDING OFF

OF CALIFORNIA HEREBY
 REQUIREMENTS OF THE
 APPROVAL IS REQUIRED.

THE UNDERSIGNED BUILDING OFFICIAL OF THE COUNTY OF CALIFORNIA HEREBY APPROVES THIS PLAT CONFORMS TO ALL REQUIREMENTS OF THE COUNTY AS TO WHICH BY APPROVAL IS REQUIRED.

1/18/06
 DATE